

Plan View

Each workstation includes;

monolithic panels

(1) BBF fixed pedestal drawer, J style pull, metal

(1) FF fixed pedestal drawer, J style pull, metal

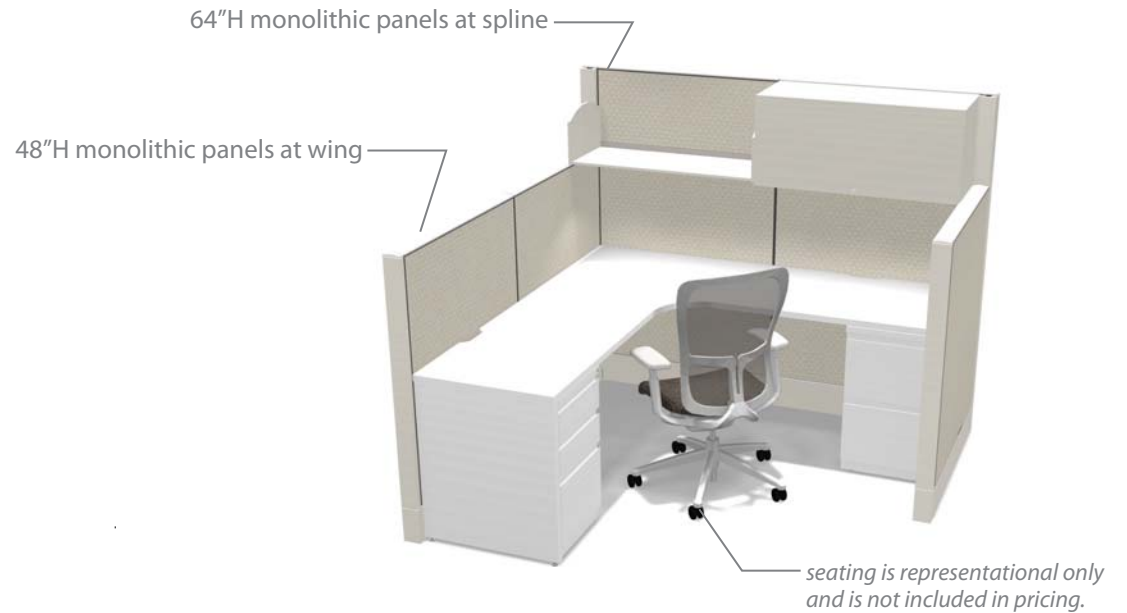
(1) open shelf, metal

(1) closed shelf w/ task light, metal

(2) duplex receptacles at raceway

24"D worksurfaces, laminate

All fabrics and trim finishes are standard grade A



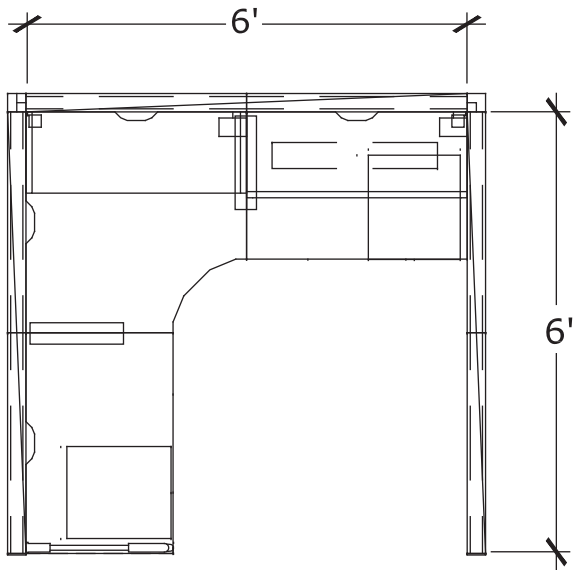
3D view - single



3D view - cluster

Premise Typical Workstation

Typical 6x6A | 6'x 6' Standard



Plan View

Each workstation includes;
 monolithic + stack-on panels
 (1) BBF fixed pedestal drawer, J style pull, metal
 (1) FF fixed pedestal drawer, J style pull, metal
 (1) open shelf, metal
 (1) closed shelf w/ task light, metal
 (2) duplex receptacles at raceway
 24"D worksurfaces, laminate

All fabrics and trim finishes are standard grade A

64"H monolithic panels at spline

48" O.A.H. stack-on panels at wing

add-on glass stack panel

*seating is representational only
and is not included in pricing.*

3D view - single

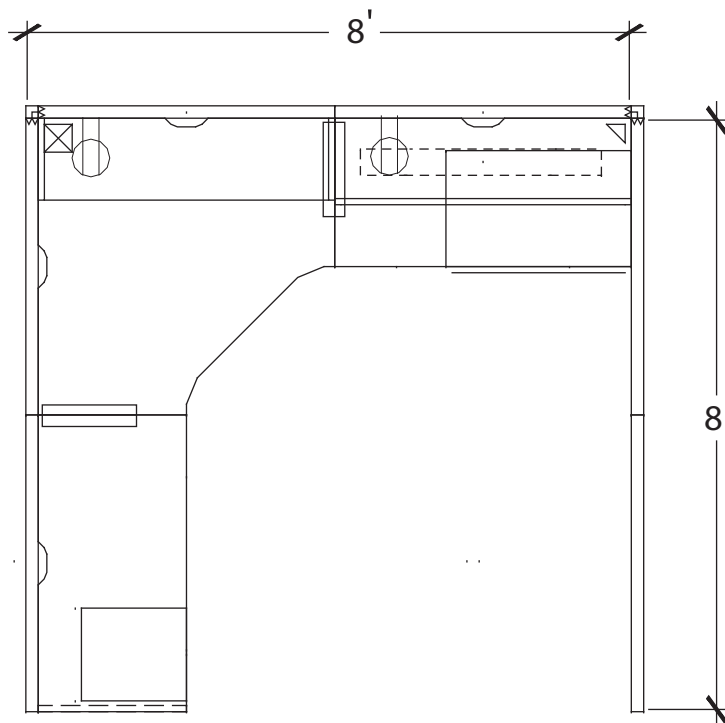


3D view - cluster

Premise Typical Workstation

Typical 6x6B | 6'x 6' Upgraded



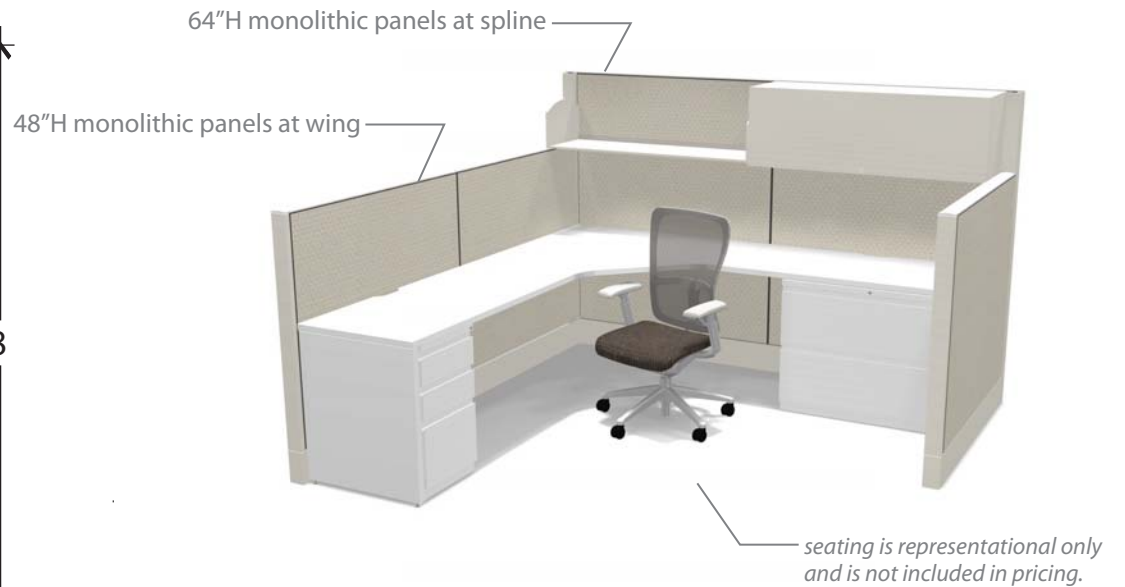


Plan View

Each workstation includes;

- monolithic panels
- (1) BBF fixed pedestal drawer, J style pull, metal
- (1) lateral file drawer, J style pull, metal
- (1) open shelf, metal
- (1) closed shelf w/ task light, metal
- (2) duplex receptacles at raceway
- 24"D worksurfaces, laminate

All fabrics and trim finishes are standard grade A



3D view - single

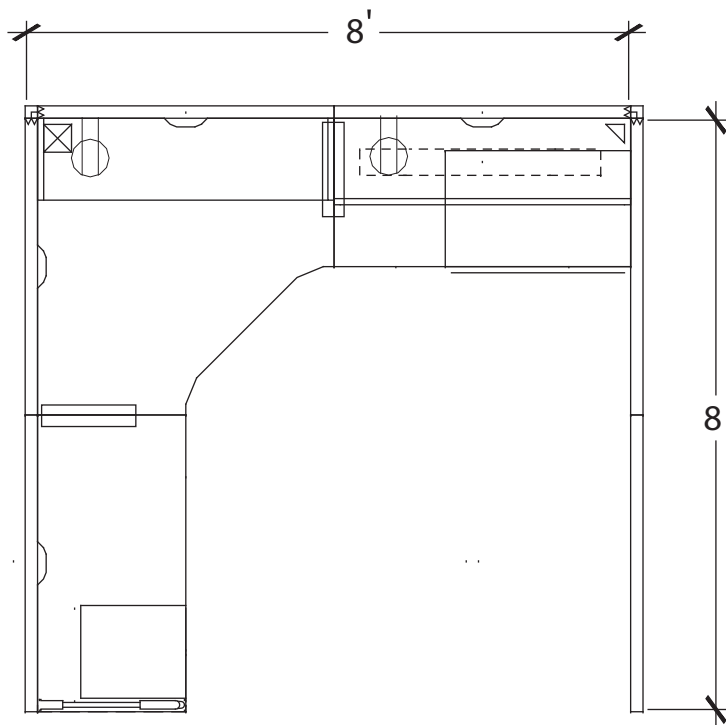


3D view - cluster

Premise Typical Workstation

Typical 8x8A | 8'x 8' Standard

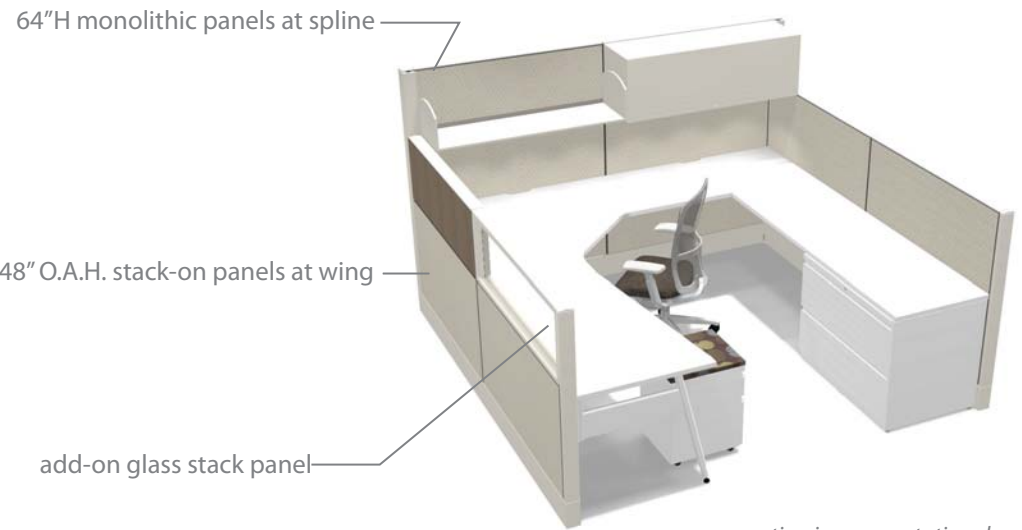




Plan View

Each workstation includes;
 monolithic + stack-on panels
 (1) BBF fixed pedestal drawer, J style pull, metal
 (1) lateral file drawer, J style pull, metal
 (1) open shelf, metal
 (1) closed shelf w/ task light, metal
 (2) duplex receptacles at raceway
 24"D worksurfaces, laminate

All fabrics and trim finishes are standard grade A



*seating is representational only
 and is not included in pricing.*

3D view - single



3D view - cluster

Premise Typical Workstation

Typical 8x8B | 8'x 8' Upgraded

